

Bournemouth Town Centre Parish



We are a community of disciples seeking to grow wider, younger and deeper through our witness to Jesus in Bournemouth Town Centre and beyond



Contents

- Welcome from our Churchwardens p3
- Our Diocese p4
- Our Deanery p5
- Our Local Area and Community p6
- Introduction to our Parish p7
- Vision for our Parish p8
- Vision for our New Priest in Charge p9
- Our Ministry Teams
 - Study, Reflection and the PCC p10
 - Our Ministerial EMAs Support Team p11
 - Pastoral Care p12
- Parish Life & Mission
 - Key Statistics p13
 - How we worship p14-15
 - Music and Choirs p16
 - Music and Organs p17
 - Music and Bells p18
 - How We Connect & Play p19
 - Community, Outreach and Wider Mission p20-21
- Parish Life & Mission cont.
 - Our Church Buildings
 - St Peter's Church p22
 - St Stephen's Church p23-24
 - St Augustin's Church p25
 - The Vicarage p26
 - Our Finances p27
- Appendices
 - Parish Statistics Summary p28
 - Recent Archdeacon's Review Summary p29
- Further Information p30

Welcome from our Churchwardens

"And whoever welcomes one such child in my name welcomes me."

Matthew 23:5

Welcome to Bournemouth Town Centre Parish!

We have both attended St Peter's for many years, and we are delighted to be serving our parish as wardens through the current vacancy.

We hope that this Parish Profile gives you a feel for what our parish and our churches are about: who we are, what we do, and how we want to develop our faith and our parish. Of course, this document cannot tell the whole story so we very much hope you will come to visit and meet us. Indeed, we hope and pray that you might even decide BTCP to be part of your own vocational journey of faith: one in which your gifts, skills and efforts can complement ours for the greater glory of God, and the further development of Jesus's work on earth.

St Peter's, St Augustin's, and St Stephen's are in the heart of our community of Bournemouth Town Centre. Whilst our church buildings are very traditional, we like to think we are a broad, welcoming church family that can and should provide a nurturing home for those comfortable with any, or all, strands of the Anglican tradition. We already offer different services and different worship styles, aiming to welcome lifelong Christians and newcomers, but we also recognise that we have much more to do in this area.

The diocese recognises Bournemouth Town Centre as a strategic position within its ambition to grow disciples.

In the last few years, despite the challenges of the pandemic, and losing several of our long-time worshipping community, we have seen new faces appearing, particularly in St Peter's Church, seeking to find a home and a family. The previous incumbent left BTCP in February 2023 and we have deliberately spent a long time in prayer and discernment looking for the right way forward for us as a community. Since being in vacancy, we have been supported by our wonderful Retired Clergy Team.

As you will see from our profile document, our parish spans all ages: with offerings for those who are retired, to our thriving chorister programme led by our fabulous Director of Music at St Peter's. There is a busy programme of free music, games clubs, coffee mornings, gardening clubs, bell ringing, and prayer groups for our congregation and wider community to be part of and a strong culture of pastoral support to those facing challenges.

We recognise there is potential for significant growth across all ages in the parish; particularly in youth ministry and we have work to do to further bring us together as one team. We are now looking for a leader who has a heart and energy for this vision, will pray and walk with us to move forward, and will lead us to achieve that. God's Work is never done...can you help us build a bigger, bolder future?





THE DIOCESE OF WINCHESTER: GROWING AUTHENTIC DISCIPLES, RE-IMAGINING THE CHURCH, BEING AGENTS OF TRANSFORMATION; BELONGING TOGETHER IN CHRIST

WELCOME TO THE DIOCESE

Thank you for your interest in coming to minister here in this Diocese.

We serve a whole range of diverse communities, from the historic city of Winchester with our glorious Cathedral, to the great port city of Southampton, the burgeoning boroughs of Basingstoke, Bournemouth and Christchurch, thriving market towns such as Andover, Alton, Alresford and Romsey, and innumerable picture-perfect Hampshire villages. In all that there is much wealth – but there is also significant deprivation too, especially in our large urban conurbations where our churches are supporting some of the diocese's poorest communities.

In every context, we are committed to the making the love and life of Jesus Christ known, through our churches, schools and chaplaincies, in a way that makes a tangible difference to those communities and their people.



In many ways the Diocese of Winchester is in transition, as is the world around us. In parish ministry we seek people who are aware of the challenges that we face, but who are motivated above all by faith, hope and love in addressing them. We welcome those who are committed to help God's church to be the very best it can be, in the power of the Spirit, releasing all God's people into the mission and ministry to which they are called. And we recognise too our need to develop in diversity.

We are excited by the opportunities before us, and warmly invite applications from those who want to join us in addressing them.

With the assurance of my prayers as you seek God's best next step for you,

✠ *Philip*

The Rt Revd Philip Mounstephen
The Bishop of Winchester

Our Deanery

A very warm welcome to Bournemouth Deans and thank you for expressing an interest in the Bournemouth Town Centre Common Tenure Interim Priest (CTIP) role. Whilst we are biased, this is an amazing place to minister and live.

On our doorstep there are miles of award-winning coastline and beaches as well as the New Forest and good public transport links to further afield. Bournemouth is a vibrant and diverse town which has changed significantly in recent years with the growth and success of the university.

The deanery is the most westerly in the Diocese of Winchester and borders the Salisbury Diocese. We are looking to forge stronger links with Poole and North Bournemouth Deanery in the Salisbury Diocese. Bournemouth Deanery is not geographically large and has a breadth of church traditions serving the people of the town as we seek to live the Mission of Jesus and serve those who live, study and work here.

This is an exciting time in the life of Bournemouth Town Centre with a potentially significant role for the parish to play. There have been past challenges in both the life of the church and town. However, with a newly elected council and the opportunities for a newly appointed priest for the parish, we are very hopeful for the future.

You will read more in this profile about the joys, opportunities and challenges that ministry in the town centre presents. The person appointed to lead the Town Centre Parish will have the chance to see things afresh and anew with the support of a faithful PCC and congregation as well as the potential of growing a team with both larry and active retired clergy across the parish.

I very much hope that the newly appointed priest will be able to play an active part in the wider deanery as we seek to work together, support and resource each other.

Thank you for expressing an interest in applying for this post at a really important time in the parish's and deanery's life.



We very much look forward in welcoming whoever is appointed at this time of change and development across the deanery.

We look forward to receiving your application but if there is anything you'd like to ask please get in touch.

Michael Smith, Area Dean of Bournemouth



Our Local Area and Community

Bournemouth is a town of many interesting things to see and do. It is a beautiful town with many things to see and do. It is a beautiful town with many things to see and do.



Due to the rare microclimate, living in Bournemouth means you experience more sunshine hours, warmer seas and generally experience a greater standard of living compared to other places in the UK. Bournemouth also have excellent health support in the area with three large hospitals.

The Bournemouth, Christchurch and Poole conurbation population has grown 5.7% since the 2011 census, from 378,900 to 400,300 in 2021.

Bournemouth is also known for its award-winning restaurants, with a vast array of international cuisines. It is home to great entertainment, with the Bournemouth International Centre (BIC) and Pavilion Theatre, a vibrant nightlife and superb shopping with the Castlepoint Shopping Centre being the largest in the UK.

The financial sector is well renowned and the fast-growing tech businesses aren't far behind them. And the Watersports industry is growing too, with kitesurfing, surfing, paddleboarding and jet-skiing a familiar sight in the water. And of course, Bournemouth is home to the Premiership Football team, AFC Bournemouth (The Cherries).

The three 'state of the art' Universities, with over 25,000 students between them, plus the numerous language schools, attract people from all over the world giving it a fun, international vibe. And with great rail links to London, only 2 hours away, holiday makers, business clients and students are in constant flow to and from the town.



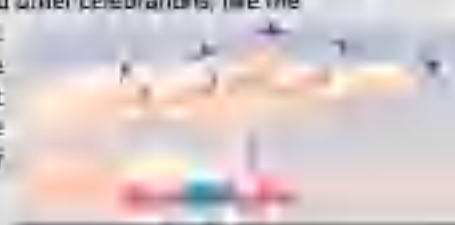
There is also Bournemouth International Airport, flying to various holiday destinations throughout the year and ferry connections to France, Spain and the Channel Islands from Poole.



To the West sits the harbour town of Poole with links to wider Dorset, including the stunning UNESCO World Heritage Jurassic Coast. To the east and on the border of the beautiful New Forest National Park is the historic town of Christchurch. In between there are various chines and woodland walks down to the beaches, all unique and beautiful in their own way.

Bournemouth town centre contains many great things to see and do and is easily explored on foot. From the popular seafront and pier approach, the town stretches back through gorgeous riverside gardens and is banked on either side by restaurants, cafés, shopping, bars, and more.

Bournemouth square will often have new and exciting things taking place, from events to festivals to themed days and other celebrations, like the Christmas Market, the Christmas Tree Walk, and not forgetting the Bournemouth Air Show festival.



Introduction to our Parish

The Bournemouth Town Centre Parish lies at the heart of Bournemouth and in many ways reflects the town's challenges and contradictions:

Bournemouth's image as a retirement resort is long gone. With three universities, a Premier League football club, an international conference centre and a revived holiday destination, it is a fast-growing metropolitan area.

However, there is also much poverty, homelessness, drug and addiction issues and many marginalised, fearful and lonely people, and the town centre, with its high street challenges, is a magnet, so there is much to do in the wider community to support this.

The parish is made up of three churches, each with a different tradition and nature. Although we have operated as a team parish for a number of years, the benefits and rewards from working as a coherent unit have still to be fully realised.

The PCC recognised that this Team Ministry structure was a barrier to this happening, as it has been administratively cumbersome, meeting heavy and has prevented the parish truly becoming one team. Therefore, at the end of 2023, the PCC put the wheels in motion and have begun the process of dismantling the Team Ministry structure, with the hope that this will be finalised during 2024.

Once legally completed, there will be much work to bring everything together and discern a new way of working but again, this will begin from now so that there will be an easier transition down the line.

Our parish is very aware that there have been challenges over the past few years which have resulted in us often looking inward rather than at the wider picture. Whilst this has required time to heal, we are now looking for someone to lead us forward. We conducted an Archdeacon's Review to help inform our decision making during the interregnum and ensure the parish knew how to choose the right person for the right prior. The full report is in the Appendix of the Profile and key highlights are embedded throughout the profile.

The parish is an extremely active one, and in recent years, has been predominantly lay led. Therefore, during this interregnum we have thrived and, with the support our experienced and ever-giving retreat ministry team, have continued with 'business as usual'. These priests have enabled us to conduct weddings, funerals, baptisms, confirmation classes, Lent study courses and more. We would be looking for someone who recognises the importance of this collaborative ministry and can continue to build on it.

Our Grade 1 and 2 listed buildings are all beautiful, and although there are the usual challenges

associated with their maintenance, they are loved and cared for and valued as centres of Christian witness and we are continually seeking opportunities to put ourselves at the heart of our community.

Our parish wardens lead by example, leading initiatives with grounds overhaul projects, enlisting the help of many community groups, and running the community café inside St Peter's Church, which offers a place for all to come and enjoy calm sanctuary and friendship to all who visit. We are determined to become an even more cohesive Christian community, who, while recognising and respecting our differences, do not see them as a barrier to our moving forward in Christ. However, volunteer shortages are an ever-present issue.

Building a future with a healthy and joyful spirit begins with a healthy community of people, people who love to be together!

Whilst recognising there are challenges ahead, this is genuinely an exciting time for the parish and the team believe it is an exciting place to be at this moment, with a lay team already tackling some of those challenges head on! Our new Priest in Charge will be a vital part in ensuring our determination ends in success, rally the troops and leading from the front.

Vision for our Parish

Worship and Community

Despite the challenges of the location of the centre of Bournemouth, and all the issues that present themselves, the PCC has a vision and a thirst for growth. We want to build an outward looking church, rooted in sharing our community, following Jesus' example.

Worship and Community

We recognise we need a strong invitational culture across all our churches, ensuring our churches are as welcoming and as engaging for newcomers as for those who are already part of our flock. We want to further offer easy and accessible ways in, including specially designed invitational services and events.

We want to use social media more broadly and effectively, to connect with some of those who we are not currently reaching, enabling people to discover more about the life of our churches and how we live our faith, with new websites that are fit for today's needs.

In Bournemouth we have a rich and diverse mixed economy, with retail shifting and new accommodation being built by the minute. With this landscape transformation, so the area demographic is changing, bringing

younger, under 35s and younger families into the parish and we want them to find a place in our parish.

Our children's ministry has been a challenge, with the lack of schools within our parish boundaries. However, our strong school transition within St Peter's Church has meant there has always been a youth focus there, and the number of young families there is already growing. It is well placed to accommodate more children when we draw more young families to St Peter's, and hopefully to St Stephen's and St Augustin's too, as they are already positioned in suburban areas within the town centre.

Our local Bournemouth and Poole schools are always keen to have contact with St Peter's, given its Civic Church status and historic building and churchyard, and we see this as another way to reach out into our wider community — and ultimately to help more people to know Jesus. St Peter's has a good relationship with both the Universities and supports their music, scholars' performance programme and their final year Arts University architecture, performance and film programmes and would like to nurture and grow these relationships further and bring worship into the picture.

A reinvigorated provision for St Peter's youth should be a key part of our future, where Sunday School was always popular a few years ago. The PCC highlighted the need for a paid Youth Worker, perhaps in conjunction with the nearby YMCA, in their 2019 PMAP. We envisage re-establishing additional worship and fellowship, open to all, but focused on this age group including the significant local student and young adult population without children. They are, of course, potentially the families of the future, too.

The PCC highlighted the desire to have St Peter's open on one night of the week (Saturday) to make the church a welcoming and safe place for those engaged in the nighttime economy, partnering with the Town Passes, who operate from St Peter's.

Parry's Café, the community café set within St Peter's Church is in the process of raising funds to reinvigorate the set up and attract more volunteers and paid employees to run the vital service. It is a hub for community and partnerships, a place of welcome to parishioners and visitors alike and allows them to connect and engage with the church on a different level, encouraging them to return time and again.

Worship and Community

We envisage a church family where people can continue to nurture and develop their faith, through our traditional forms of worship and fellowship and the reintroduction of some varied expressions of worship, which all are still united by a common core of scripture based teaching & discipleship.

We have a vision for a bold and courageous church family equipped to act as witnesses to Jesus and who are comfortable contributing to the life of the church through service or leadership roles and who work as one team together. To that end we are in the process of dismantling the Team Ministry, breaking the barriers and forming joint teams across all areas of our operations, to enable greater resource and idea sharing and learning.

Worship and Community

We have no doubt that with ongoing prayer and further supportive and enabling leadership, we can more fully realise our calling to know Jesus, to do His work in the modern world and so grow new disciples.

Vision for our New Priest in Charge

We are looking for a priest and Christian leader of proven experience and spiritual depth to lead us in developing a cohesive parish and establishing and implementing refreshed mission plans for a 3-year term.

Keeping always in mind the call to present the Gospel afresh to each generation, you will need to be a confident communicator, able to seize the benefits of social media as well as more traditional means and provide clear and capable oversight of both inherited and pioneering mission, which will include oversight of a Youth Worker, two Directors of Music and the Parish Operations Administrator and our wonderful team of retired clergy.

We are looking for someone who can develop our committed lay volunteers, and delegate effectively so that people's contributions are deployed to greatest effect. In particular, we believe the following are key aspects for this new role:

- Holds spiritual life at the very core of their own life and ministry and will encourage us to do the same
- Maintains a balance in their own life between work, recreation, family and friends

- A flexible and inspiring preacher who is comfortable teaching in a diversity of contexts who connects the Gospel with contemporary life and its challenges
- Uses the liturgical resources of a liberal Catholic Parish creatively, while leading the development of other styles of worship appropriate to the wider parish with a particular focus on engaging with new families, children and students
- Promotes, supports and aids the development of the strong choral traditions within the parish

- A good strategic thinker and manager of change who consults deeply in formulating plans, ensuring that contributions are elicited in meetings rather than proceedings dominated by strong voices
- Brings matters to clear conclusions and then is firm in overseeing the implementation of those decisions
- Displays energy in leading the growth of our relationships with the local communities
- A strong communicator who takes a lead in engaging others with the mission of the parish, both those within and those currently beyond our congregation
- Someone who is confident in delegating and gives space, support, and recognition for others to flourish, whilst

retaining leadership and oversight (e.g. most especially in relation to the valued employees of the parish)

- Recognise the demands of the God of justice, grace and mercy in our lives and community
- Brings experience of effective outreach and proactively offers imagination and energy in developing our life and mission, especially towards younger people
- Continue to help us offer a radical welcome as the whole community rejoices: of age, ethnicity, sexual orientation, gender identity
- Committed to, and understanding of, Fresh Expressions and other forms of pioneer ministry, with a vision of how to integrate this within our Parish, offering our pioneer priest licence and security in his role
- Display an infectious enthusiasm to engage with the process of Christian Discipleship and engender a sense of belonging by encouraging participation in services
- Have a passion and enthusiasm for nurturing the needs of children, young families and newcomers
- Promote study groups to deepen learning and relationships with faith

- An empathic, active listener with strong interpersonal skills
- A warm and approachable presence in our communities, demonstrating the mercy and love of Christ through care of others
- Uses their own gifts and those of our teams to ensure active pastoral care across the parish

- A team player and a team leader especially within our Ministry team and PCC
- An effective organiser who will prioritise workloads and makes effective use of the material and people resources of the parish
- A proactive approach to Christian stewardship and confidence in addressing its financial dimensions
- A servant with experience of leading churches into numerical and spiritual growth who can help us turn our looks outwards

- An open attitude in working with other denominations, religions and community parties, in pursuit of our core values
- To be a leader in the community
- Will fully participate in the life of the deanery (including synod and diocesan) and Diocese

Dear Team – Staff, Volunteers & the PCC

Church Staff

The current church employed staff comprises the Administrator and the Director of Music at St Stephen's. In addition, the Director of Music at St Peter's and two Organists (St Peter's and St Augustin's) are self-employed.

In the past we also had a Team Vicar, but not currently.

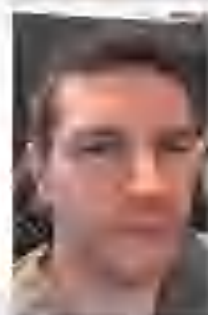
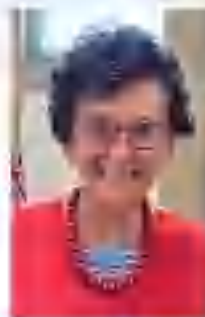
The church's other ministry areas are led by our experienced volunteers, including pastoral, safeguarding, prayer and bible.

Our various PCC of 11 members, comprising:

- 2 x Parish Wardens
- 3 x Deputy Church Wardens
- The PCC Treasurer
- The PCC Secretary
- 3 x Deanery Synod Reps

The Trustees span a wide age range from across our church family and includes those who have been members for several years alongside others who have joined more recently, and who enjoy friendship and humour both in work and outside of the 'work' setting.

The PCC are currently supported by three separate DCC teams, all with their own Treasurers, Secretaries, Fabric



Officers, music departments, sacristans, event organisers and so on.

As already mentioned, these teams will now begin to draw together as one throughout the coming year or so, and like the PCC, will begin working together,

reducing the number of required meeting and encouraging collaborative learning and best practice.

We have continued through the interregnum with business as usual but could not have done so without our team of retired clergy who have tirelessly supported us.

Two are better than one, because they have a good reward for their toil. For if they fall, one will lift up his fellow. But woe to him who is alone when he falls and has not another to lift him up. Ecclesiastes 4:9-10

Our 'Retired' Clergy Support Team

During the vacancy, our team of retired members of clergy, who are part of our parish, have covered all the services we hold throughout the year, including Special Feast Day services, Lent Study groups, school visits, together with all the life events ministry:

- Baptisms
- Weddings
- Funerals

They are:

The Revd Canon John Turpin
The Revd Canon Andrew Gough
The Revd Dr David Wheeler
The Revd Dr Chris Steed
The Revd Dr Paul Collins
The Revd Steve Parselle
The Revd Stephen Holmes
The Revd David Lund
The Revd Robin Harger
The Revd Alan Dadd
The Revd John Staples
The Revd Robin Nash
Mr Roger Marley LLM Emeritus

And occasionally we see the return of a previous BTCP Parish Warden, The Revd Dr Rob Sawdy, and The Revd Canon Michael Smith, who has been supporting the parish behind the scenes throughout the vacancy. Surely the best area dean in the diocese!

Without them we would be lost and cannot thank them enough for all that they have always given to support the parish, not just in practical terms, but their spiritual guidance, their wisdom and experience, the pastoral care for the parish and beyond, the warm welcome they give to our visitors and congregations alike but also their fellowship, kindness and sense of humour.

The successful applicant will find a well-established team who are easy to work with, always prepared to go the extra mile and great fun to be with.

We are blessed.



Pastoral Care

Pastoral support is the responsibility of all clergy members and lay people within the parish.

It is not something carried out only by our Rector, but s/he retains an overview and responsibility for it.

During the vacancy, our small but dedicated team of Pastoral Support, have banded together and have visited the lonely and the sick, the elderly and the infirm within our parish community.

Pastoral support involves a wide range of activities and is not always by the ordained clergy team but by many members of our church community and it may reach people who are not in the parish.

Activities include hospital and home visits; support for individuals and families in need or crisis; end of life care for members of our congregation and support for their families; Holy Communion at private homes and residential care homes; transport to worship,

church events and hospital appointments; meals and shopping for those recovering from operations or adjusting to life outside of hospital, life with a new baby and so on.

We would like to provide an even wider range of activities and support - for carers and for the bereaved, for example. We also wish to extend our welcome and care to new members of our church. We could do this in many ways; by developing our welcome practice with follow-up to get to know newcomers better; to follow up with those who have been baptised or married in our churches; to follow up with those who have held a funeral in our churches.

Ideally there should be a Pastoral Care Co-ordinator to facilitate support and liaise frequently with the Rector and for there to be active, personal encouragement from him/her to anyone who may like to officially join the team, after doing it informally for years, with formal training given to all to instil the confidence and skills to ably carry out the role and to form a sense of 'team'.

*Let us love one another, for love is from God, and whoever loves has been born of God and knows God.
1 John 4:7*

Parish Life and Mission – Key Statistics

Although brought together as a parish many years ago, operating under one PCC, the churches have continued to operate as three separate churches, under a Scheme of Delegation, giving specific powers to the individual DEC teams.

This will be the first opportunity for us to appoint a leader specifically for the new parish, who will come into the role of helping us unify the three churches and the three congregations so that our focus can be more outward looking.

We know we are still at the beginning of the process and there is much to be done.

The parish honours the tradition of the modern liberal Catholic church, and we are an inclusive parish. We encompass a range of worship styles from Anglo-Catholic tradition of St Stephen, and the full choral Sung Eucharist and Evensong at St Peter's the more central but similarly reverent setting of St Augustin's.

Key Statistics

Our average Sunday attendances in October 2022:

- St Peter's – 95
- St Stephen's – 41
- St Augustin's – 22

Electoral Roll:

- St Peter's – 120
- St Stephen's – 44
- St Augustin's – 80

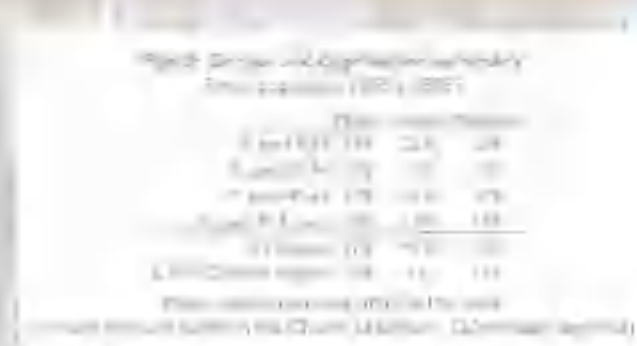
In 2021, 42.2% of Bournemouth, Christchurch and Poole residents reported having "No religion", up from 29.3% in 2011. The rise of 12.9 percentage points was the largest increase of all broad religious groups in Bournemouth, Christchurch and Poole. Because the census question about religious affiliation is voluntary and has varying response rates, caution is needed when comparing figures between different areas or between censuses.

In 2021, 46.8% of people in Bournemouth, Christchurch and Poole described themselves as Christian (down from 59.7%), while 6.9% did not state their religion (down from 7.7% the decade before).

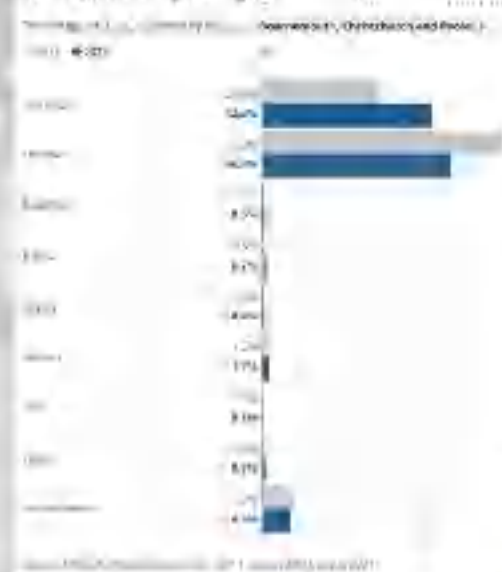
In 2021, 91.3% of people in Bournemouth, Christchurch and Poole identified their ethnic group within the "White" category (compared with 94.2% in 2011), while 5.4% identified their ethnic group within the "Asian, Asian British or Asian Welsh" category (compared with 2.9% the previous decade).

There has been a growth in the number of students in the parish – linked with the development of Bournemouth University and Arts University Bournemouth. There are high proportions of singles, young couples and students.

There are pockets of poverty amongst some older people and single parents, with some struggling families.



In 2021, 44.8% of Bournemouth, Christchurch and Poole residents reported having "No religion"



Parish Life and Mission - How we Worship

Typical Weekly Worshipping Pattern

Here is the typical Weekly schedule of services in the parish

	St Peter's	St Stephen's	St Augustin's
Sunday 8am	Holy Communion BCP Keble Chapel		
Sunday 10am	Sung Eucharist		Communion - BCP
Sunday 10.45am		Sung Mass	
Sunday 4pm	Choral Evensong or Evening Prayer in school holidays		
Wednesday 10am		Low Mass Lady Chapel	
Thursday 11.15am			Monthly Holy Communion BCP
Thursday 12.15am	Holy Communion BCP Keble Chapel		



Parish Life and Mission – How we Worship

Across the weekly services we have a variety of styles of worship. On a Sunday morning the 8am service in St Peter's is a traditional setting of the Communion service.

The 10am Sunday service in St Peter's is a full traditional Sung Eucharist with choir, alternating girl and boy trebles on a fortnightly rota, with the adult back row supporting weekly. Bells are rung prior to the start of this service.

The 10am service at St. Augustin's is a more central BCP Holy Communion service with hymns.

The morning service at St Stephen's moved to 10.45am several years ago, to better suit the parishioners, and is a Sung Mass service with a traditional spelt choir.

At 4pm there is a Choral Evensong service at St Peter's, which takes place every week, except during school holidays, when it changes to an Evening Prayer service, with hymns but no choir.

All weekday services are a said service.



We hold monthly prayer group meetings and there is a weekly Bible Study group meeting in St Peter's Church.

Post covid, the previous Incumbent did not recommence the Monday Lunchtime Communion service at St Peter's or the Saturday morning Low Mass Service at St Stephen's. The monthly Good News @10 service at St Peter's, which was a more contemporary and informal style of worship focussed on families and young children was also not recommenced.

There is an eagerness to explore family worship and re-establish Sunday School at St Peter's to cater for the ever-growing number of young families that come each week. Each Sunday, after each main morning service, the congregations come together for coffee and companionship, and there is a charity table at St Stephen's!

We want to continue to encourage people in using their gifts in worship and are continuing to explore further collaboration between the worshipping communities, especially when celebrating principal feasts, like Epiphany Carols, Easter Sunrise on the beach, All Souls Day, Ascension Day etc, as we do for Confirmation, Lenten Study and other such events.

The St Peter's choir and servers have participated in the Remembrance Day Civil service at the War Memorial and the Nine Lessons & Carols service at 4pm on Christmas Eve always has the mayor, local MP and Civil Leaders participating.



We want to bring people closer to Christ through worship, deepening their relationship with Him and each other.

Parish Life and Mission – Music and Choirs

Across the Parish, music is an integral part of how we worship and celebrate.

Duncan Courts, AdvDip ARCO is the current Director of Music at St Peter's, with Neil Sissons the current organist.

Sean Tucker, BSc (Hons), FETE, ARCM, FRSA, FGMS, MISM has been at St Stephen's since 2019 as Director of Music and Organist. There is the resident organist at St Augustin's.

The choirs rehearse in the evening during the week, with St Peter's rehearsals on Wednesdays and Thursdays and St Stephen's on Fridays.

St Peter's Women's Choir is a group of 20 – 25 singers (who are auditioned from time to time for special events). We help form the choir to sing, as unlike instrumentalists they will not 'de-tune' in any period. The choir maintains the traditional English repertoire

which also brings music of the polyphonic, classical and modern examples of sacred music.



Thirty years On

The choir was founded before 1879. At that time, some of the choristers came from London and boarded in the Choir Home, while others were drawn from the growing town. All were educated in the choir school. In the 1920s, the town had grown large enough that all of the choristers lived locally and attended a wide range of local schools.

The St Peter's Choral Foundation

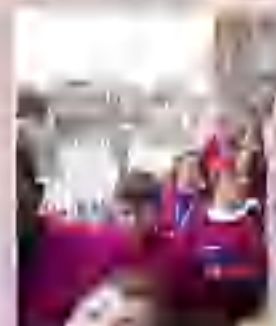
was launched in the autumn of 2021, as Bournemouth's 'cathedral choir'. The Foundation builds on 150 years of musical excellence at St. Peter's to create choirs capable of singing for concerts, recordings, tours, and in cathedrals, in addition to the weekly round of choral services in Bournemouth.



The choir is made up of 32 choristers (16 boys & 16 girls), together with choral scholars (aged 13-18), and capable soprano, alto, tenor and bass adult singers. Choristers and choral scholars receive musical training worth more than £500 a year. There is NO CHARGE for choir membership. Just as importantly, they make new friends and quickly develop their confidence, teamwork, leadership, and resilience while having a lot of fun.



Ascension Day sees the St Peter's choir at the top of the tower to sing in celebration at sunrise. However, only if the Peregrine Falcons aren't in residence! And when social distancing guidelines allowed, nothing stopped the choir from performing albeit outside!



*A Psalm for giving thanks. Make a joyful noise to the Lord, all the earth!
Serve the Lord with gladness! Come into his presence with singing! Psalm 100:1-2*

Parish Life and Mission - Music and Organs

The parish is home to two nationally significant instruments

At St Peter's, the organ was built in 1914 by Harrison and Harrison of Durham. It replaced an instrument by 'Father' Henry Willis, which was the original organ which was dedicated in 1870. It is the largest non-extension organ in Bournemouth. It has 52 speaking stops over three manuals and it is located in a large chamber in the north-east corner of the church, where the original vestries had been.

The organ was overhauled by the Liverpool firm of Rushworth and Dreaper in 1976, increasing the size to 52 speaking stops and adding a detached console on a moveable platform at the front of

the nave. Regular maintenance and small modifications have taken place over the years, but today, nearly half a century later, the instrument needs comprehensive rebuild.

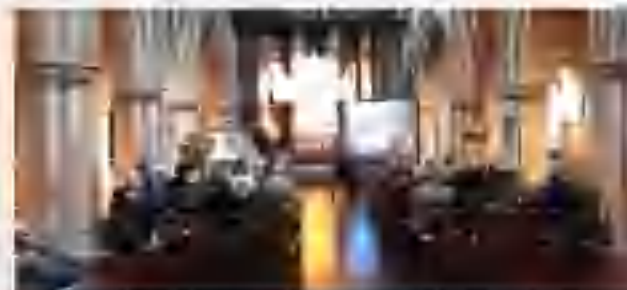


The founding fathers of St. Stephen's intended music to be an important part of the life of the Church, and when the Church was completed (apart from the tower) in 1898, they had installed a superb organ by William Hill & Son (considered to be the Rolls Royce of organ builders in the 1890s).

It stands high up in the South Transept of this beautiful and impressive church, in a stone gallery which was built to house it. In 1951, the instrument was rebuilt and restored by Rushworth & Dreaper. Included in the schedule

of work were a partly new action, a new console and several tonal alterations.

St Stephen's organ was featured on the BBC Music for Organ with Robert Gower playing a piece by Percy Whitlock, who was organist there in 1930-35.



Organ Recitals are ongoing in both St Stephen's and St Peter's today

St Stephen's runs a series of eight monthly recitals from April-November, each year, on the first Saturday of the month. Due to the organ's location, a camera and a large projector screen are used, enabling the audience to see both the keys and the organist's hands up close.

St Peter's features organ recitals throughout the year within its weekly Wednesday lunchtime recital series, running from the first Wednesday in February through to Christmas. They showcase performers both established and new, up and coming talent which is important



Praise him in the cymbals and dances; praise him upon the strings and pipe Psalm 150:4

Parish Life and Mission - Music and Bells

St Peter's has a long history of bell ringing as it still the only peal of bells in Bournemouth until the mid-20th century, and has marked every celebration, moment of mourning and even moments of warning.

St. Peter's has the oldest and heaviest ring of bells in Bournemouth. There are eight bells hung for full circle ringing in one English style of change ringing and a Sanctus bell which is chimed by a switch in the chancel.

When the tower was completed in 1870, it was intended to be equipped with a peal of bells, and a bell-chamber, ringing chamber, and circular stairway were provided. The bells were manufactured by Taylor's of Loughborough and were dedicated at Whitsun in 1871. In 1936, the church proposed re-hanging and re-tuning the existing ring and adding a Sanctus bell as "a distinct and beautiful memorial" to Alfred Dakely, a previous incumbent who had died the previous year. It was found that the bells were in a poor state, and Taylor's suggested re-casting the bells because many improvements had been made in bell-casting since 1871. At the time, this was still the only peal of bells in Bournemouth, and after recasting by Taylor's, they were dedicated on 20 November 1937.

Peter Murdock Saint is the Captain of the Bell Tower and as such has a varied role to play at St Peter's.

These include:

- Ringing for Sunday services
- Arranging and running bell ringing practices weekly
- Teaching new ringers
- Gathering ringing teams for weddings and special occasions, from the retirement of the previous incumbent to the Diamond Jubilee and her subsequent passing and the coronation of the new king
- Arranging for visiting teams of ringers and other branch members to use our bells
- Maintenance of the ringing chamber and bellry
- Liaising with the bellfounders



Praise him with clanging cymbals; praise him with loud clashing cymbals Psalm 150.5

Parish Life and Mission – How We Connect and Play

Across the course of a year we have a variety of events which pull people from across the parish and the community together and there is weekly printed and emailed copies of 'Pew News' to around 200 members of our parish, plus regular postings and updates via our various websites, Facebook pages, 'Twitter' and beyond. Notices are given out before the main services each Sunday in each church, so those not on the e-group still know what to look out for, and there are posters and fliers for every event up on the notice boards at the back of each church building.

There are free weekly Wednesday Lunchtime Recitals from February-December, when the community café is open, serving lunches and treats of all shapes and sizes at St Peter's. These always draw a crowd, with lots of regular faces and many who appreciate seeing a friendly face, affordable nourishment and sharing in the delight of great music. The Bournemouth Universities Music scholars play on the first Wednesday of the month, to support their performing accreditation, and these too are always well supported. Similarly, there are Friday Jazz, Swing and Blues concerts on the last Friday and now the first Friday of each month and there is a different following for them, always pulling people in from all over the conurbation. St Stephen's holds monthly Organ Recitals on Saturday mornings from April to November and again, these are all free to attend, with refreshments served.

St Peter's also hosts its own Jazz Festival Week, that receives a lot of sponsorship and support from local businesses, raising significant funds for the church and further expands our footprint in the wider community, with one even marrying in the church and others attending various services and events.

There is always something going on in the parish, with monthly coffee mornings at St Augustin's, shared lunches, celebrating significant events, like Jubilees and Coronations, to Mother's Day, St Peter's Day or any other day we can think of to use as a reason to get together. To raise funds for the parish or other charities, we hold Happa Suppers, Baza Dinners, Quiz Nights and more. You name it, we will arrange it to have another reason to get together and have some fun, sometimes in the Annex at St Augustin's, or within St Peter's Church.

Throughout the year we are host to concerts, plays, poetry recitals, Tea, Tail & Tittle Tattle guests, local charity partnerships, the NHS University Bournemouth and Bournemouth University, sponsored-auselling and so many other events throughout the year - there are simply too many to mention.

And I commended play, for man has nothing better under the sun but to eat and drink and be joyful, for this will go with him in his toil through the days of his life that God has given him under the sun.

Eccl 3:15



Parish Life and Mission- Community Outreach & Wider Mission

In the winter months we visit all of the local community in several ways.

We, like other parishes, partner with Faithworks Wessex, who its great work in coordinating Christian response to the challenges of the town working with all the various agencies to provide care and essential services. Their Steuade programme has always been supported at St Stephen's, allowing emergency warm, safe spaces in severe cold spells. The partnership with Faithworks is a key relationship, enabling the parish to respond to challenges as part of a team, and this needs to be re-established fully once this parish filled.

The incumbent was the organiser of regular Ecumenical Leaders Breakfast Meetings. These need to recommence in some form once the successful applicant is in post.

St Stephen's were key in helping the Bournemouth HealthBus become established, by providing them with a home in St Stephen's Hall, until it was sold recently, enabling them to provide top quality healthcare to the homeless in the community.

St Peter's hosted the Salvation Army Community meals twice weekly until recent years, with the policing team keen to disperse gatherings into the wider community and away from the town centre itself, and St Augustin's twice weekly lunches has sadly also moved on to a new venue.

We are always looking for ways to welcome in the local community to use our spaces.

We support the Livedwell Dorset NHS Health Check Team, who have begun to hold monthly clinics at St

Peter's and St Augustin's to enable them to reach into the community, and bring Health checks to people where they live and work, to identify health issues early.

The Bournemouth Town Pastors have been our partner for many years and assisted all of St Peter's to improve the vibrancy within our Night-Time Economy. St Peter's also used to partner with the Nightclub Chaplaincy team until the premises closed during covid, opening the doors on Saturday nights to those needing to find a safe space during those late-night hours. Wind down and be ready to return home safely. This was a key part of the St Peter's vision and one that could be revisited.

Many 'self-help' groups use our spaces at St Peter's and St Augustin's from 48 until 01, with a midweek meditation class now growing in popularity in the Resurrection Chapel.

We support Christian Aid across the parish, with sponsored walks and collections, and for several years now, we have supported the Bournemouth Food Bank, with weekly donations and delivery programme taking donations to their Bournemouth Hub and additional support with their Harvest and Christmas Hamper Appeals programme. We also support Water Aid through St Augustin's, Lebanon through St Stephen's as their partner parish, and Macmillan Caring Locally, the Ladies Fiddle Orchestra and The World's Rainbow Charity through St Peter's, supporting special events and giving donations to them throughout the year.

St Peter's Church also has three associated charities:

The Friends of St Peter's Church, The St Peter's Church Development Project Ltd and the St Peter's Church Foundation.

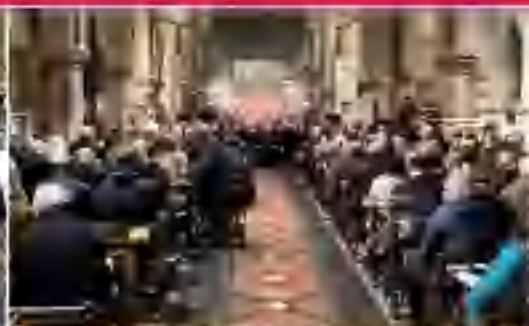
We host a variety of concerts, dinners, lunches, coffee mornings and Lenten giving etc to raise much needed funds for all of these causes that are so close to our parish heart.

Since Covid we have not resumed our visits to local worship at our local care homes, except for providing individuals with communion, but there are many care homes and seniors' apartments locally which we see as an opportunity to fulfil our diocese's vision of growing disciples and reaching more widely into our community.

We work with many schools and both the Universities of Bournemouth, as our business, and the graveyard at St Peter's, have great historic significance. So English, History, Architecture, Art, Film, Acting and Design students are commonplace across our church buildings and grounds and the Grounds Remained Project at St Peter's connected with many different groups and residents in the neighbourhood.

We would also welcome ways for the church buildings to be used more effectively by the local community in addition to their current use and would welcome children's untrained groups and schools and the universities in a much deeper way, though the lack of schools within the parish boundary remains a challenge.

Parish Life and Mission- Community Outreach & Wider Mission



Parish Life and Mission - Our Church Buildings

Each of our beautiful churches is different; both in where they are situated, their size and their on-site facilities. As a result, to seek to maximise mission and ministry potential – both in worship and for the community.

Two of our churches are Grade I listed – St Peter's and St Stephen's - and St Augustin's a Grade II listed and as such, are all accompanied with the challenges and the cost of on-going maintenance. Due to our location, our buildings suffer a lot from what is known as 'weathering' (salt damage) which causes our buildings materials to break and crumble and a programme of restorations and modernisation is continuous and so the parish warden is well known to the Diocesan Advisory Committee (DAC).

St Peter's church is the largest of the parish's churches and is known as the 'mother church' and

the civic church of Bournemouth. It is right in the centre of town, set within nearly 4 acres of woodland and a closed graveyard.

To commemorate the lives of the fallen of the parish after the Great War, the Chapel of the Resurrection was built within the grounds. The chapel was renovated with the help of National Lottery funding ten years ago.

The church hall was sadly sold back in the 1960s.

St Stephen's Church is still near to the centre of town but set back from the main drag, close to the Town Hall and civic buildings.

Up until 2023, the church benefitted from the large St Stephen's Hall, which was owned by a separate Trust and had separate meeting spaces and a flat above that was rented out and supplied good revenue for the church.



and with the latest DI just completed, a review of priorities will be in process during 2024.

St Augustin's church is set on the northern edge of the parish boundary in a largely residential area, in the middle of the two university campuses.

It is the only church in the parish to still have a hall – or annexe as it is known.



Parish Life and Mission - St Peter's Church

St Peter's is the historic town-centre parish church for Bournemouth. It has stood on its present site in the heart of the busy town centre since 1845. The present building was completed in 1879 to a design by George Edmund Street. It is a Grade 1 listed building which includes a richly-decorated Gothic Revival interior and a 202-foot-high tower and spire.



The St Peter's community is not young family friendly. Made up predominantly of adults, there is a growing need for a youth worker on a Sunday morning, as an increasing number of the congregation are from a diversity of backgrounds and bring their young families. Indeed, church members come from far and wide with few living directly in the parish boundary, as is typical of a town centre church. Many tourists visit both for services and for historical reasons throughout the year.

The doors of St Peter's are open every day of the week, from 10am-5pm (4pm in the darker months) for prayer each day. The community café - PARRY'S CAFÉ - operates 3-4 days a week and is open after the main service on a Sunday and warmly invites everyone in. The café is run by volunteers which is something that we would like to change and need to make a permanent position in the future.

As the café's name suggests, St Peter's has strong links with the Arts, including the baptism of Hubert PARRY as well as the grave of his mother. The Shelley tomb houses Mary Shelley, the heart of her husband, Sir Percy Bysshe Shelley, their son, Sir Percy Florence Shelley, and his wife Lady Jane, and her parents, novelist William Godwin and feminist writer Mary Wollstonecraft. Sir Dav Godfrey, founder of the Bournemouth Symphony Orchestra and Captain Lewis Tregonwell (founder of Bournemouth) are also laid to rest in the churchyard.



During Covid, the Grounds Re-imagined project was started, with a team of church members alongside volunteers from the local community, residents, homeless community and various organisations. They cleared the grounds of brambles, bushes and weeds; tents, alcohol bottles and drug paraphernalia of the homeless with all the issues that accompany them. Long forgotten graves were rediscovered, and families have been able to locate the resting places of their loved ones.

Over 10,000 bulbs were planted, and hundreds of plants planted. This work has put the grounds back on the map as a place to visit, whether for lunch,

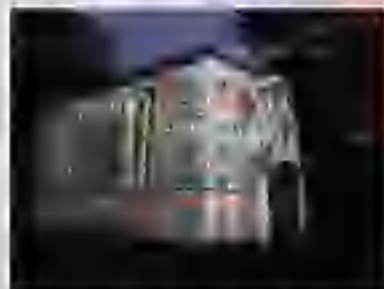
sitting at one of the many picnic benches, the outdoor classroom spaces for nature and art lessons, a film set for the university students, a music venue, or simply walking the dog. It has even been a wedding reception venue. All these things have taken place since St Peter's

reclaimed the land and friendships have been made for life along the way. Just wonderful!



Parish Life and Mission - St Peter's Church

A walk around the recently regenerated churchyard of 4 acres and the Chapel of the Resurrection reveal the resting places of families, heroes, composers and musicians too, annotated by our Heritage Trail walk signposts. This background compliments the long musical tradition of our worship, with a strong choir and the recent formation of the Choral Foundation, part of the church's Development Project vision – a large, ambitious project to improve the building and cement its place within the community for years to come.



And so fundraising is a key part of life at St Peter's, both in-house and finding outside funders to help fulfil the vision of restoration and community purpose. From Coffee Mornings and Pancake Day fun to abselling down the tower and sky-diving. Anything goes to get the job done!



Recently we have had necessary work carried out on our tower and spire. The project was huge and was planned in phases to allow fundraising to take place and church funds to build up to cover the shortfall. Overall, the project cost nearly £170,000 but it has ensured the tower and spire's safety again and keep the bells ringing.



As mentioned many times before, the maintenance work throughout the church is ongoing for which the family of St Peter's and the parish need to continue tirelessly to raise funds for. This includes the clerestory windows, our organ, sound system and lighting. The next necessity is our failing heating system, which will be tackled during 2024 before winter makes a return. It will be done!

So, each week we welcome musicians to our church for a range of lunchtime concerts, including Jazz, Swing & Blues and there is a constant flow of choirs, orchestras, bands, actors, poets, artists, exhibitions and so on, in order for us to raise money whenever possible. Many of the events are free to enjoy and so everyone and anyone is welcome to come and enjoy. We have a regular prayer group and bible group and hold regular discussion groups, all enabled by our church members and open to all.

We consider ourselves to be an active community church serving and representing the town centre community of Bournemouth, investing with many groups and offering a safe and warm space in the heart of a busy town centre but there is still much work to be done and for that we need help and guidance.



Parish Life and Mission - St Stephen's Church

St Stephen's is a spectacularly beautiful Grade 1 listed church, with one stained glass and a magnificent trophy reredos. The church was designed by architect John Loughborough Pearson as a memorial to Alexander Morden Bennett, first vicar of St Peter's Church, Bournemouth.



Its worship is Eucharist and follows the Anglo-Catholic tradition. Music is strongly embedded in the celebration of mass. The choir has a wide range of mass settings and anthems in its repertoire and Sean Tucker is the latest in a long line of Directors of Music who are masterful exponents of the Hill and Sons organ.



The congregation is drawn from a wide geographical area attracted by the form of worship. There is a strong sense of community amongst the congregation especially in terms of pastoral concern. However, numbers attending has reduced and there is an urgent need to attract new, and younger, members to the fold.

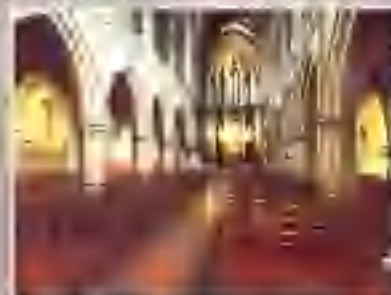
Sunday Mass, which has been conducted almost exclusively by our excellent team of retired clergy, is always followed by a sociable gathering of the congregation over coffee and sherry. Mass on Wednesdays in the Lady Chapel is well attended.



The church stages regular Saturday coffee mornings which are primarily social events.

And a broad range of talented organists give recitals on the first Saturday of the month between April and November.

Unfortunately, the Church is not open every day for the community to use for private prayer. It is open more often during the lighter months of the year when volunteers are more willing to come to open and close but the hours and days are not regular so visitors cannot guarantee entry. This needs to change.



Sadly, the St Stephen's Hall trustees made the decision to sell the hall after the mounting maintenance costs and the lack of able-bodied volunteers to run it meant it became unviable and in 2023, the Hall Trustees sold it. Whilst the church has suffered a large reduction in income, it will benefit from the proceeds of that sale in due course.

Parish Life and Mission - St. Augustine's Church

St. Augustine's Church stands proudly as a busy junction in Bournemouth and its presence makes an important witness statement to all who pass by. The church is a fine example of the early Decorated style and is built of Swaneage stone, with earth stone dressings to the windows and the polygonal bell turret on the western gable. Many alterations have inevitably been made with the passing of time, but the decorated windows remain a special feature of this beautiful church.



Henry II well-served in the parish of St. Stephen, offered to build a new church as a thank you to God when the town was expanding northwards. He commissioned his friend William Rulihoff to design and build the church, which was dedicated to St. Augustine the North African Bishop of Hippo. The foundation stone was laid on 13th November 1191 and the church was consecrated by the Bishop of Winchester on 24th October 1192.

The general preference is for one traditional form of worship both in our service of Common Worship and Common Prayer. Both traditional and more modern hymns are enjoyed, adeptly played by the organist. There is much gratitude to and enjoyment from the ministrations of the retired clergy team who lead the worship week by week.

The congregation are elderly and are a very caring community who try to look after each another and provide whatever pastoral or spiritual care is needed.

The contribution of younger people, who could carry the church forward into a long future, are very much missed. St. Augustine's been without incumbent support for many years and have not felt able to forge a path forward. This family of worshippers are therefore excited at the prospect of some support and clarity of vision from the new priest-in-charge and are looking for someone who would live among the community and be able to lead them forward in their spiritual lives as well as practical support, working together on a bright new future.

St. Augustine's has shared the church and hall for many years on Sundays and other occasions with two worshipping communities - namely the New Creation Life Ministries (NCLM) and the Korean Church Bournemouth. However, the church building remains closed during the week, which needs to change.



St. Augustine's is very fortunate to have a spacious hall attached to the church, which is rented by various groups, including many community support groups. It also provides space for many social and fund-raising events, from cheese & wine evenings to cream teas, coffee mornings and parish get-togethers for larger events like the Queen's Jubilee and Haggis Suppers. Ideally the hall could be rented out more frequently, but we are short of manpower to service the premises. We rely on the rental income to help the church to pay its way.

The church has various maintenance issues, eg. the roof which has led to some dampness on the walls inside. We are addressing this and hope that work will begin soon.

We look forward to furthering the growth of God's Kingdom in Bournemouth together with St. Peter's and St. Stephen's. We hope that under the leadership of a new incumbent our churches together can make a difference in our town and places of worship.

Your Accommodation

2A ST ANTHONY'S ROAD, BOURNEMOUTH, BH2 6PD

The Vicarage is a well-established house in a quiet part of central Bournemouth, convenient for the town centre and between St Augustin's Church and St Stephen's Church, which are both within easy walking distance.

Due to the location, the house is not subjected to the busy, holiday traffic and parking headaches that is suffered in the town centre. However, because of parking at both St Peter's Church and St Stephen's Church, free town parking is available which is a benefit.

The downstairs has a study for office use, a large lounge and separate dining room leading off the kitchen. The lounge has access and views of the garden via patio doors. There is also a utility room and a separate WC.

Upstairs there are three double bedrooms with built-in storage, and a fourth smaller bedroom, while the family bathroom contains a bath and separate shower and there is a separate downstairs WC.

The garden has mature shrubs and lawn, and the garage is accessed by a small driveway.



Our Finances

The Bournemouth Town Centre PCC does not operate to an annual profit, and to maintain at least a minimum cash reserves of expenditure in its accounts.

The churches maintain financial independence, with several restricted funds and legacy monies given for specific churches and purposes. There is a centralised PCC fund, that all three DCEs pay into, to cover administration, office, insurance and clerical registry fees, as these are all now personalised functions.

DMF obligations are paid in full, unless exceptional circumstances arise, for example covid or when St Augustin's boilers needed replacing in 2022, at a cost of over £12,000. The diocese agreed with the PCC to afford some relief to maintain their financial reserves.

Since 2016, the finances of the parish have been scrutinised in greater depth, and strategies put in place to ensure proper governance and accountability. As such, St Augustin's and St Peter's are now in a much stronger position and are focussed on maintaining and growing their bank balances, with increases in rental income, especially since covid. St Stephen's have struggled due in the main to the loss of the rental income from the hall buildings. However, their operating issues have been offset due to legacies, and now the hall sale, but this is not sustainable for the longer term and organic growth is a necessity.

The consolidated accounts do not allow for proper scrutiny as real picture of what lies beneath is hidden, so reviewing the accounts at church level gives better clarity.

Incoming Resources

2022 was the first full year of financial results since the Covid pandemic lockdowns and this is noticeable in the accounts. Even after taking out the one-off effect of a large legacy received by St Stephen's Church overall income increased by 9% from £177,536 to £193,889. When the legacy is included overall income for the period is £177,860.

As is to be expected these increases have mainly derived from parishioners and the general public being able to attend church services (income from collections rising from £17,027 in 2021 to £21,520 in 2022), carry out parish events (income for 2021 was £nil but recovered to £7,319 in 2022) and use of the church facilities (church hall lettings) and car park fees rose from £46,435 in 2021 to £56,774 in 2022.

Resources Used

Resources used across the parish increased by 9% to £207,452 (2021: £189,999). This was brought about by significant increases in the running expenses of the churches which rose from £36,473 in 2021 to £42,105 in 2022. In addition, buildings maintenance rose from £11,782 in 2021 to £27,877 in 2022. This is to be expected as the buildings were in use for the full year again.

The other costs that showed large increases in the year both relate to church services and can again be explained by the fact that there were a full 12 months of services in 2022 compared to the previous period.

Church service costs rose from £27,920 in 2021 to £35,411 in 2022 and clergy costs from £484 to £1,807 as the incumbent ceased taking all services and allocated more to the retired clergy team.

Finally, the special expenditure increased in the year from £15,006 in 2021 to £16,706 in 2022. In 2021 the entire cost related to organ repairs at St Stephen's and although there was a further £2,060 for St Stephen's organ repairs and also £1,556 for the organ at St Peter's the majority of the cost, £11,472, related to the boiler in the St Augustin annex.

Net Movement in Funds

Overall funds have increased by £138,954 to £497,464 compared with 2021 (39% increase) made up of:

- Net incoming resources £151,282
- Losses on investments £15,228

The net incoming resources include the legacy of £183,971. Without this the parish would have shown a significant loss in the year due to St Stephen's deficit. The losses on investments are as to be expected in what was a very volatile year for all financial assets.

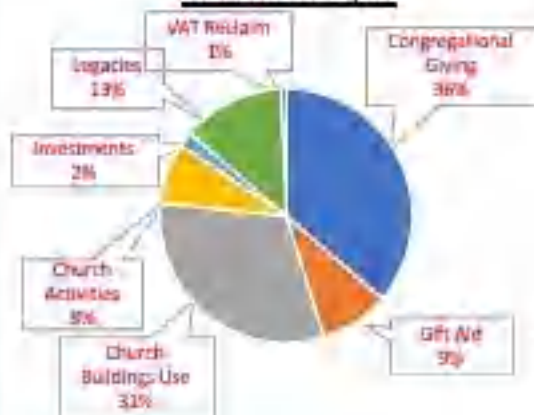
Balance Sheet

The only assets continuing to be shown as restricted are those held in trusts on behalf of St Augustin's.

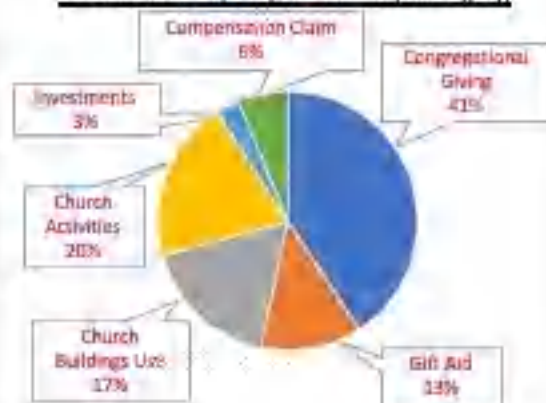
As is to be expected following earlier comments on the loss in investment value of the investment portfolio the assets dropped to from £327,470 in 2021 to £138,553 in 2022.

Our Finances - P&L Summaries

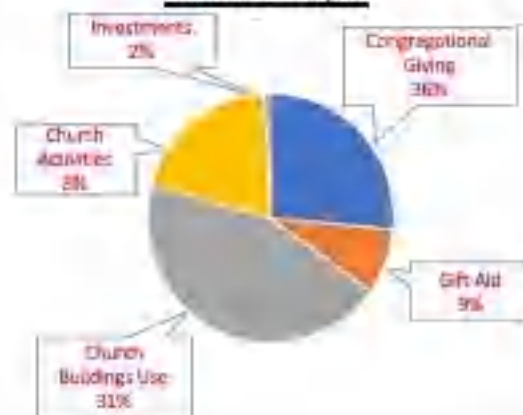
St Peter's Church
2022 Income £116,026



St Stephen's Church
2022 Income £48,010 (not incl £168,718 Legacy)



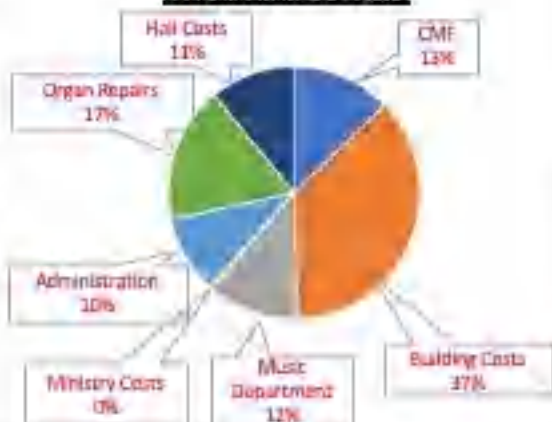
St Augustin's Church
2022 Income £47,850



St Peter's Church
2022 Expenditure £101,230



St Stephen's Church
2022 Expenditure £95,470



St Augustin's Church
2022 Expenditure £40,281



Parish Statistics Summary

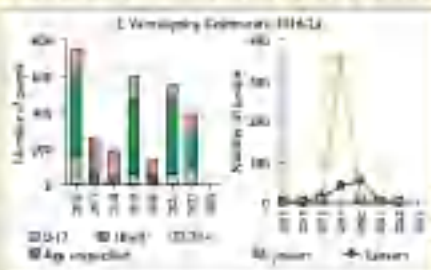
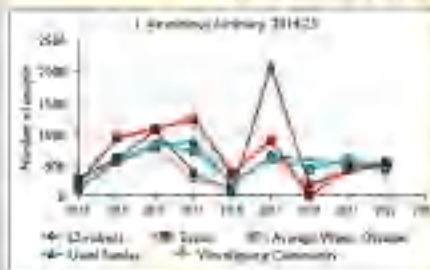
The annual Statistics for Mission data is collected by the Church of England and gives an overview of attendance and participation.

Among other things it outlines the size of the parish's worshipping community, such as, attendance of church services throughout the year and at major festivals of Easter and Christmas, baptisms, weddings and funerals. We should recognise that the numbers for 2020 and 2021 were impacted by Covid disruption and the 2022 figures show rebuild.

Unfortunately, the St Swithun's Love Church sits inside the parish that still features in these figures and leads to strange spikes, so a much clearer picture is obtained by looking on a church-by-church basis, although Dashboards for each church are not obtainable.

It is also sometimes not possible to see on the portal as it depends upon how the data was historically collated by the Church of England.

SOM Dashboard for the Parish of Bournemouth Town Centre in the deanery of BOURNEMOUTH

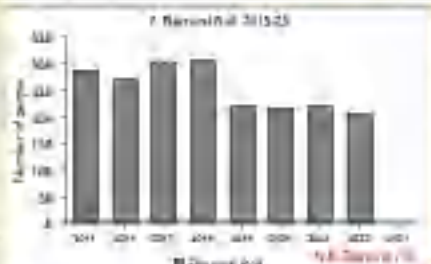
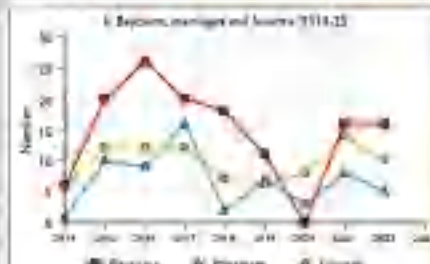
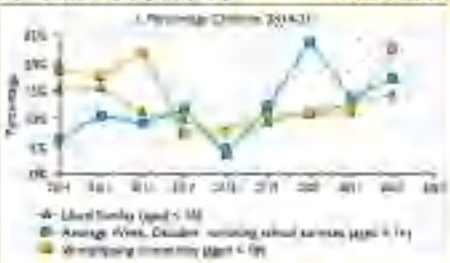
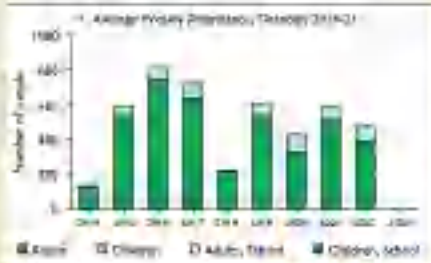
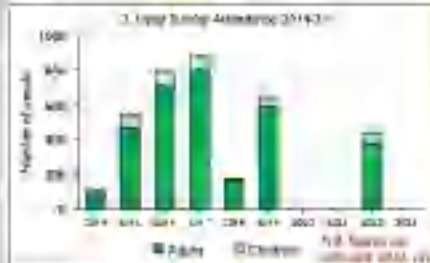


Parish Census and Registration Summary
Parish population (2011-1622)

Year	Male	Female	Total
2011	208	220	428
2012	210	224	434
2013	212	228	440
2014	214	232	446
2015	216	236	452
2016	218	240	458

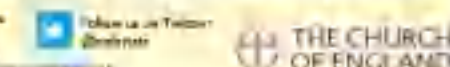
Parish Baptisms (2014-2021)

Year	Baptisms
2014	10
2015	10
2016	10
2017	10
2018	10
2019	10
2020	10
2021	10



The dashboard presents figures as submitted to churches currently in the parish. The dashboard is updated from annual returns for Mission records. Average weekly attendance (average attendance on Sunday and weekday, not at services) and total representation in Sunday (Fig. 1 & 2) do not include attendance at services for services. Services: Easter, Good Friday, Christmas, Christmas Eve & Christmas Day, Ascension, All Saints, and All Souls. Pastoral manager and spiritual care (pastoral care and spiritual care manager). Financials (pastoral care and spiritual care manager). Because of pandemic-related church closures, some figures were not submitted in 2020. Community: taken from the 2011 national Census. Figures are based on the 2011 Census (taken from the Office for Population, Communities & Local Government, Sep 2011). The above statistics have been supplied from parish databases to the system. For more information see: <https://www.churchofengland.org/membership/>

Wherever it is possible to see the year on year for the most of changes in the number of churches and statistics in the parish. Number of churches: 2014-2023. 2014: 2014, 2015: 2015, 2016: 2016, 2017: 2017, 2018: 2018, 2019: 2019, 2020: 2020, 2021: 2021, 2022: 2022, 2023: 2023. Produced by Data Systems, Church Mission, Great Street, London SW1E 6JZ. Data of publication: 08/02/2024.



Archdeacon's Review Summary

In the middle of last year, the Archdeacon Richard Bond conducted a review within the parish, to help the PCC better understand how the parish was feeling as the time began to recede.

62 questionnaires sent out and 43 returned. Some of the congregation found the questions somewhat tricky to understand and felt unable to answer them. The request for email responses disenfranchised some respondents and the diocese apologised for this short falling. Some questioned the review itself and that the questions seemed largely irrelevant to the problems the parish face and highlight how little the diocese understand the parish.

These voices speak of deep hurt over many years by the ministry and personality of the previous Rector, of a complete absence of 'servant leadership'.

Whilst this is the single parish of BTC, there was little evidence of a coordinated and shared vision serving a community of three churches. Instead, it found not one but three communities, with St Augustin's and St Stephen's often feeling neglected and the poor relations (due in large to insufficient attention given to them by the previous Rector).

However, there is a real desire for vision, leadership, presence and spiritual leading of a new incumbent. From a number we heard of a heart and desire to be open, to serve the community and meet people at their point of need.

The benefice is encouraged to engage positively and openly in the Bournemouth-wide deanery conversations and strategic review about the best church provision for the town going forwards. Part of this should include an examination of whether the current BTC model best serves its people? The paucity of recent leadership has left a benefice which, whilst having significant things to celebrate, is limited in its vision of the Church and needing to be part of a bigger future.

There is much low hanging fruit to bring about swift change under new leadership, with a strong sense of family and belonging within those who worship in the parish: A faithful and committed lay leadership team with the support of strong operational and communication skills in the office, are the foundation stones to build upon for the successful applicant.

STRENGTHS OF BTCP

- A strong sense of family
- The warmth of welcome
- The liturgical and musical traditions
- Communication and administration
- Committed and faithful churchwardens and stewards

CHALLENGES FOR BTCP

- Lack of a commonly owned shared vision and aims
- Shortage of volunteers
- Lack of finance
- Paucity of opportunities for nurture and growing discipleship beyond services
- Limited vision of the life and work of the Church
- A general feeling of 'distance' between the parish and the Diocese

That there be no divisions among you, but that you be united in the same mind and the same judgment.

1 Corinthians 1:10

Archdiocesan Review Summary

There is much to be gained from continuing about each church, some new initiatives, with a strong sense of family and belonging within those who inhabit it in the world.

A faithful and committed lay leadership team, a desire to be nurtured and faith developed, with the support of the strong operational and communication skills in the parish office into the foundation stones to build upon for the successful applicant.

There is already change happening with the dismantling of the DiC structures and a desire of the PCC for closer collaboration between the worshipping communities, although this will take time to be fully embraced and embedded for some of the WEP members.

Working more closely with our neighbouring parishes in the deanery will provide support and learning and support from the area team has proved invaluable during the vacancy and we are keen to continue to build relationships in the future.

There is much to be gained if every possible

There are a few key recommendations that provide a good summary of the main needs of the parish.

1. *Seek to foster a close and collaborative work relationship between a future incumbent and the PCC*
2. *Agree a shared vision for BTC benefice which can provide missional direction for all and each of the churches going forwards.*
23. *Ensure the ministry of nurturing faith and discipleship is highlighted for the next incumbent appointment as an area of priority to be established and developed.*
31. *Carefully define the kind of leadership style and skills you desire in your next incumbent and ensure the parish is signed up to the implications.*
33. *Build an understanding of where growth might come from and what changes it will be necessary to accommodate to succeed in growing the church.*

and a few key priorities:

2. *Build the PCC's confidence in its role and leadership.*
9. *Consider time limited core priorities for each of the three churches (aligned to the shared vision).*
10. *Work with the next incumbent (and possibly others) to discern the best pattern of services across the churches that both continues to provide something of the current liturgical richness appreciated by the faithful who come, but also provides new opportunities for reaching and growing those currently not reached/ attracted.*
12. *More generally and broadly reinvigorate prayer as part of the churches' life.*
15. *Discern, learning from other parishes, how young families might best be supported in their faith.*
21. *Aim for positive engagement, being actively involved in the deanery's discernment and planning, especially as it effects the centre of Bournemouth.*

Further Information

Getting in touch

Parish Office - Lisa
Tel: 079 71 062892
Email: btcp@live.co.uk

Websites:

St Peter's Church - <https://www.stpetersbournemouth.org.uk>
Bournemouth Town Centre Parish - <https://btcp.org.uk>

Social Media - [Facebook: BTCP](#)
- [X: BTCP](#)

St Peter's Church
Hinton Road
Bournemouth
Dorset
BH1 2EE

Our mobile is staffed:

9am - 5pm Monday - Friday and in emergencies at weekends

Please contact Lisa or take a look at our websites for any further information/documents you may wish to review, including our latest newsletter and accounts.